

1 SITE PLAN
 A1.0 1/16" = 1'-0"

FOR LANDSCAPING, PUBLIC SPACE AND ROOF DECK DESIGN SEE SHEETS L1.0 - L1.6

Dancing Crab Properties, LLC
 1301 RIVER ROAD
 POTOMAC, MD 20854

STRUCTURA
 111 ROCKVILLE PIKE
 SUITE 950
 ROCKVILLE, MD 20850
 301-987-9234

CAPITOL ENGINEERING GROUP
 1825 K STREET NW
 SUITE 375
 WASHINGTON, DC 20006
 202-216-0039

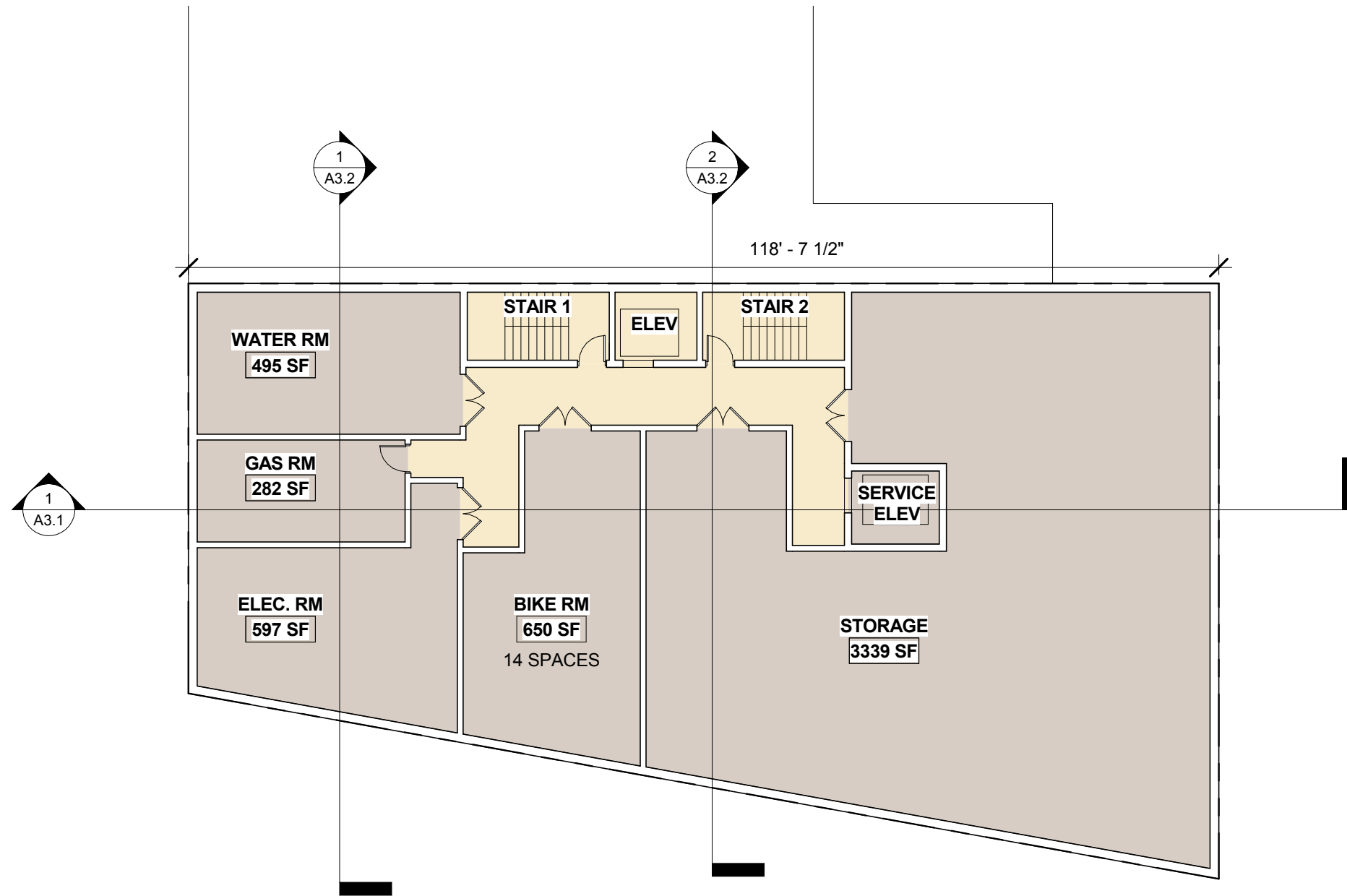
Tenleytown Apartments
 4611 46th St NW
 Washington, DC 20016

REVISIONS
 1 Supplemental Prehearing Filing 9/07/18

DATE: 09/07/18
 PROJECT NO: 2016-042
 DRAWN BY: AG
 CHECKED BY: JMRB

Bonstra Haresign
 ARCHITECTS

ARCHITECTURAL SITE PLAN



1
A1.1
CELLAR FLOOR PLAN
1/16" = 1'-0"

- RESTAURANT
- RESIDENTIAL
- CIRCULATION
- SERVICE / UTILITY
- VEGETATION

NOTE: ALL SF SHOWN ON PLANS ARE NET SF.

Bonstra Haresign
ARCHITECTS

Dancing Crab Properties, LLC
1901 RIVER ROAD
POTOMAC, MD 20854

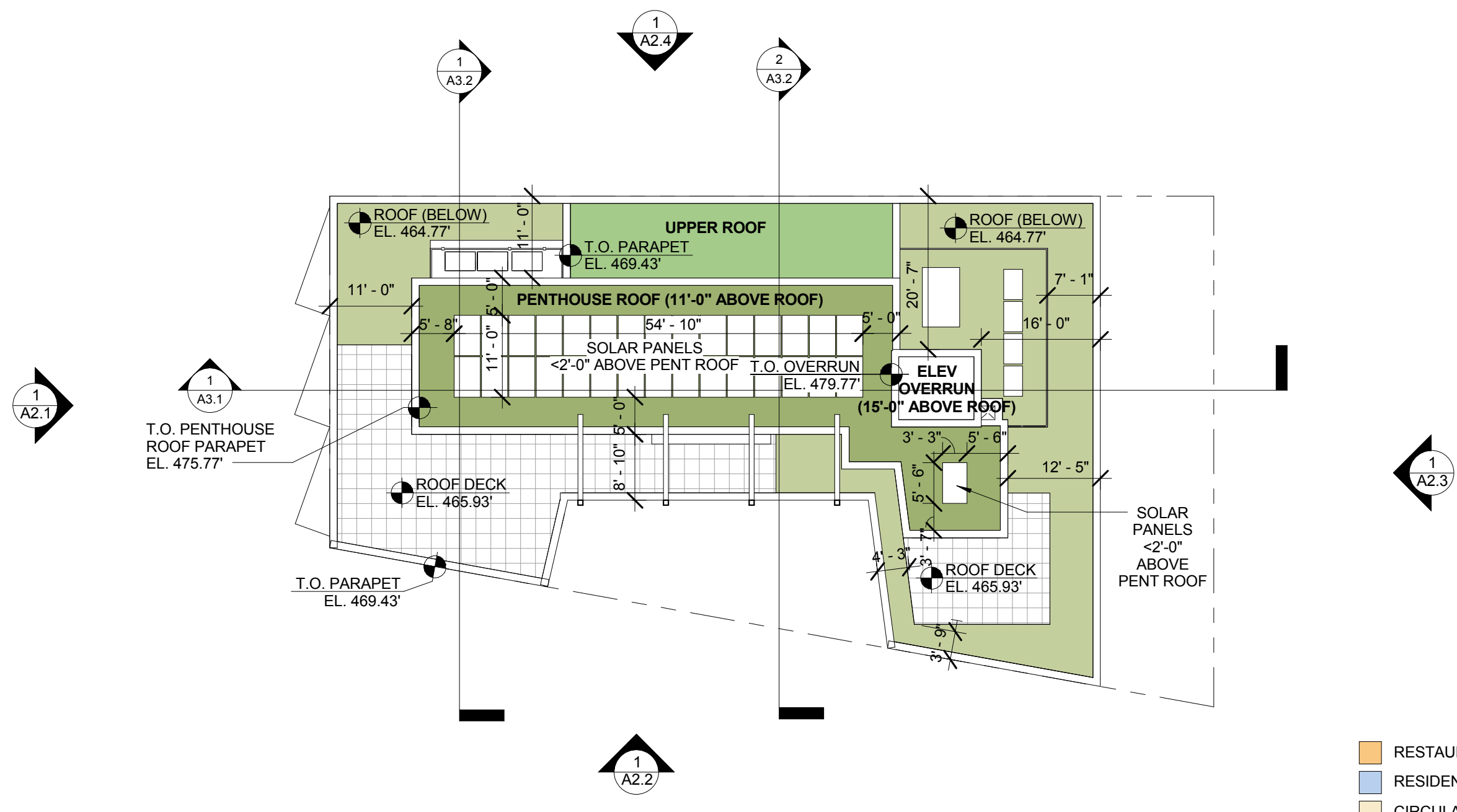
STRUCTURAL ENG
111 ROCKVILLE PIKE
SUITE 950
ROCKVILLE, MD 20850
301-987-9234

MEP ENGINEER
CAPITOL ENGINEERING GROUP
1825 K STREET NW
SUITE 375
WASHINGTON, DC 20006
202-216-0039

Tenleytown Apartments
4611 46th St NW
Washington, DC 20016

REVISIONS
1 Supplemental Prehearing Filing 9/07/18

DATE: 09/07/18
PROJECT NO: 2016-042
DRAWN BY: AG
CHECKED BY: JMB



1
A1.8

PENTHOUSE ROOF PLAN

1/16" = 1'-0"



- RESTAURANT
- RESIDENTIAL
- CIRCULATION
- SERVICE / UTILITY
- VEGETATION

Dancing Crab Properties, LLC
 1301 RIVER ROAD
 POTOMAC, MD 20854

STRUCTURA
 111 ROCKVILLE PIKE
 SUITE 950
 ROCKVILLE, MD 20850
 301-987-9234

CAPITOL ENGINEERING GROUP
 1825 K STREET NW
 SUITE 375
 WASHINGTON, DC 20006
 202-216-0039

Tenleytown Apartments
 4611 46th St NW
 Washington, DC 20016

REVISIONS
 1 Supplemental Prehearing Filing 9/07/18

DATE: 09/07/18
 PROJECT NO: 2018-042
 DRAWN BY: AG
 CHECKED BY: JMB

Bonstra Haresign
 ARCHITECTS

PENTHOUSE ROOF PLAN

1728 Fourteenth Street, NW, Suite 300
 Washington, DC 20009-4309

www.bonstra.com 202 588 9373 T

A1.8



1 WEST ELEVATION
A2.1 1/16" = 1'-0"

signage APPROXIMATE LOCATION OF FRONT LIT BUILDING AND RETAIL SIGNAGE.

Dancing Crab Properties, LLC
1901 RIVER ROAD
POTOMAC, MD 20854

STRUCTURAL ENGINEER
STRUCTURA
111 ROCKVILLE PIKE
SUITE 950
ROCKVILLE, MD 20850
301-987-9234

MEP ENGINEER
CAPITOL ENGINEERING GROUP
1825 K STREET NW
SUITE 375
WASHINGTON, DC 20006
202-216-0039

Tenleytown Apartments
4611 46th St NW
Washington, DC 20016

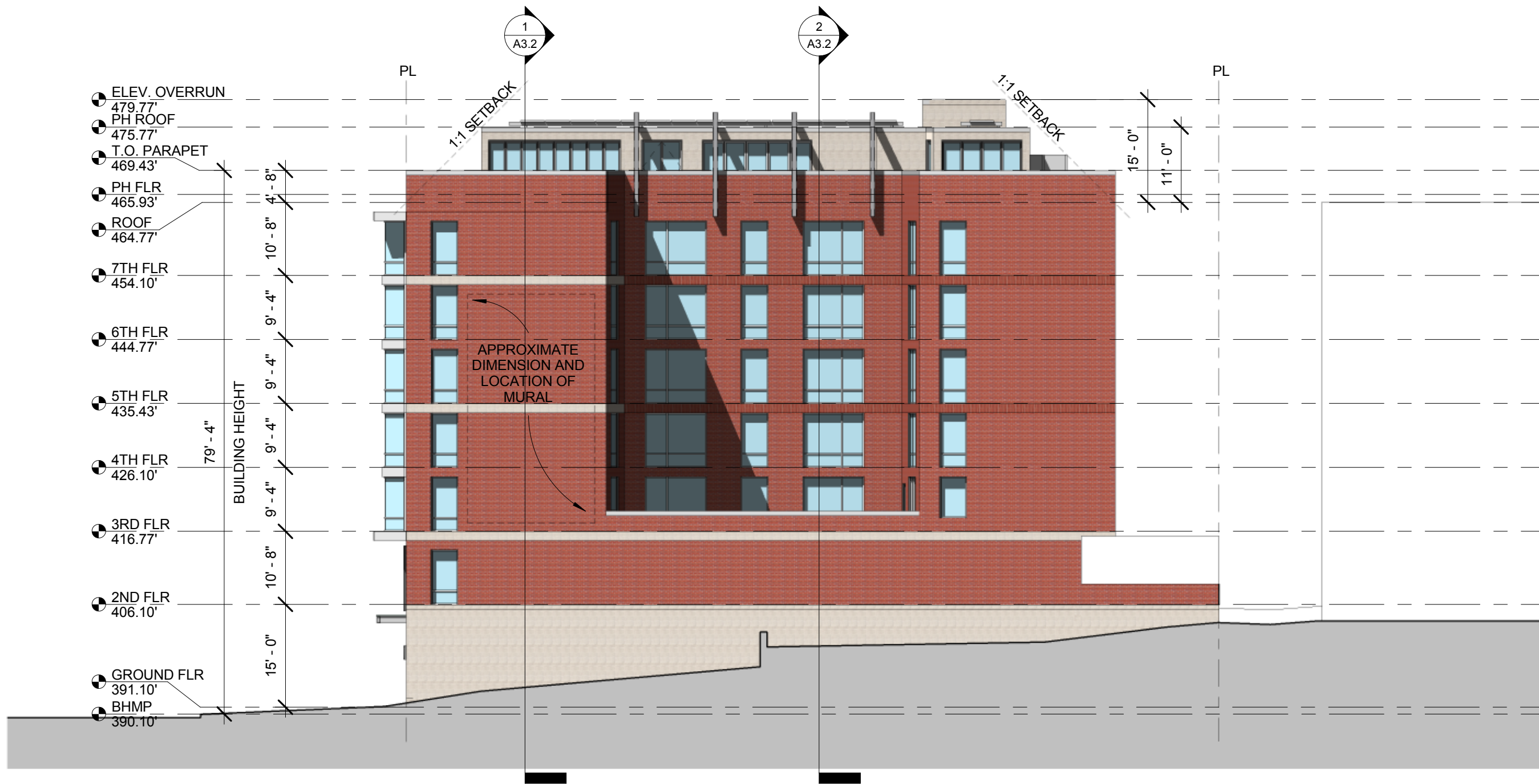
REVISIONS
1 Supplemental Prehearing Filing 9/07/18

DATE: 09/07/18
PROJECT NO: 2016-042
DRAWN BY: AG
CHECKED BY: JM/RB

Bonstra Haresign ARCHITECTS
1728 Fourteenth Street, NW, Suite 300
Washington, DC 20009-4309
www.bonstra.com 202 588 9373 T

WEST EXTERIOR ELEVATION

A2.1



1 SOUTH ELEVATION
 A2.2 1/16" = 1'-0"

CLIENT
 Dancing Crab Properties, LLC
 1301 RIVER ROAD
 POTOMAC, MD 20854

STRUCTURAL ENGINEER
 STRUCTURA
 111 ROCKVILLE PIKE
 SUITE 950
 ROCKVILLE, MD 20850
 301-987-9234

MEP ENGINEER
 CAPITOL ENGINEERING GROUP
 1825 K STREET NW
 SUITE 375
 WASHINGTON, DC 20006
 202-216-0039

Tenleytown Apartments
 4611 46th St NW
 Washington, DC 20016

REVISIONS

1	Supplemental Prehearing Filing	9/07/18
---	--------------------------------	---------

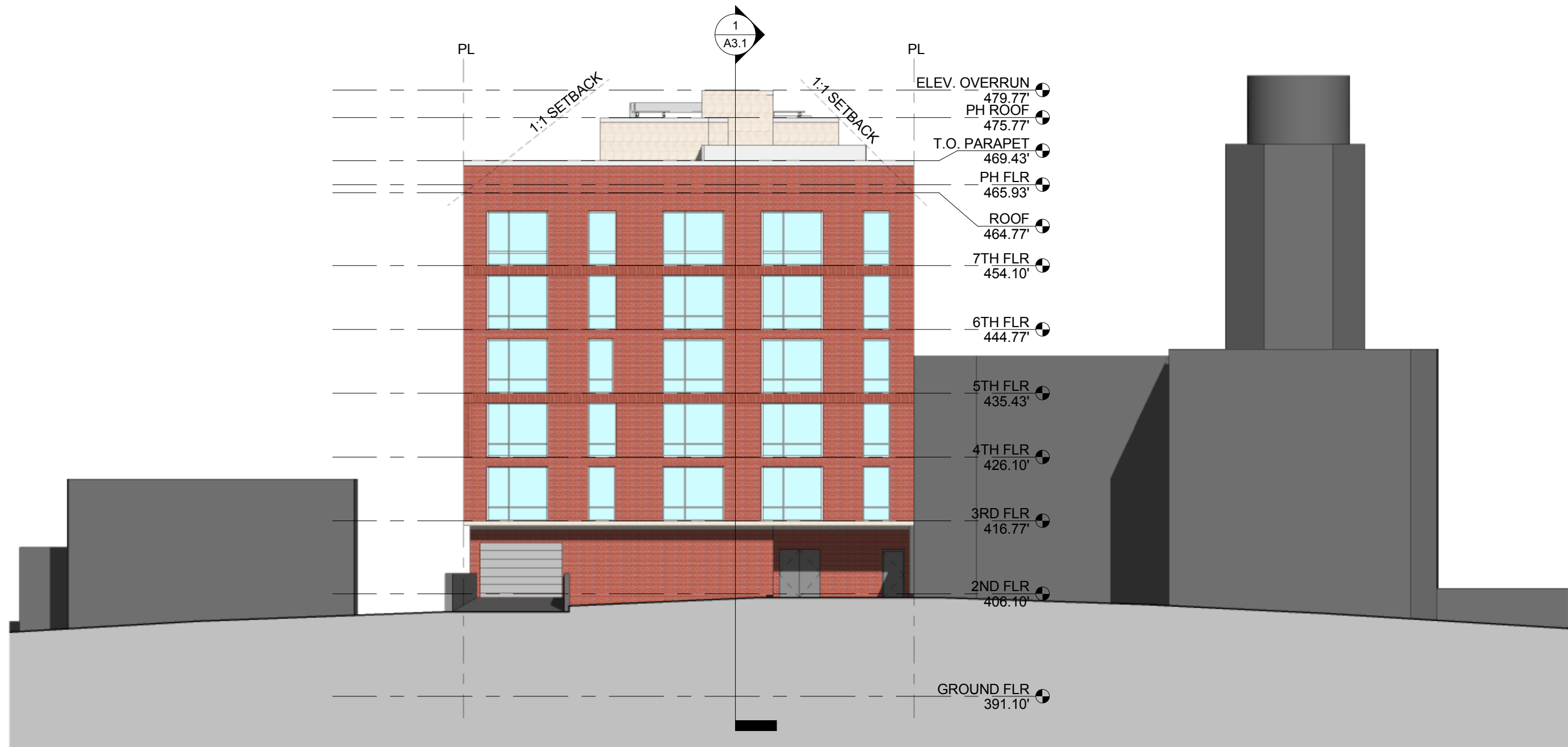
DATE: 09/07/18
PROJECT NO.: 2016-042
DRAWN BY: AG
CHECKED BY: JM/GB

Bonstra Haresign ARCHITECTS

1728 Fourteenth Street, NW, Suite 300
 Washington, DC 20009-4309
 www.bonstra.com 202 588 9373 T

SOUTH EXTERIOR ELEVATION

A2.2



1 EAST ELEVATION
A2.3 1/16" = 1'-0"

Dancing Crab Properties, LLC
1301 RIVER ROAD
POTOMAC, MD 20854

STRUCTURA
111 ROCKVILLE PIKE
SUITE 950
ROCKVILLE, MD 20850
301-987-9234

CAPITOL ENGINEERING GROUP
1825 K STREET NW
SUITE 375
WASHINGTON, DC 20006
202-216-0039

Tenleytown Apartments
4611 46th St NW
Washington, DC 20016

REVISIONS
1 Supplemental Prehearing Filing 9/07/18

DATE: 09/07/18
PROJECT NO: 2016-042
DRAWN BY: AG
CHECKED BY: JM/GB

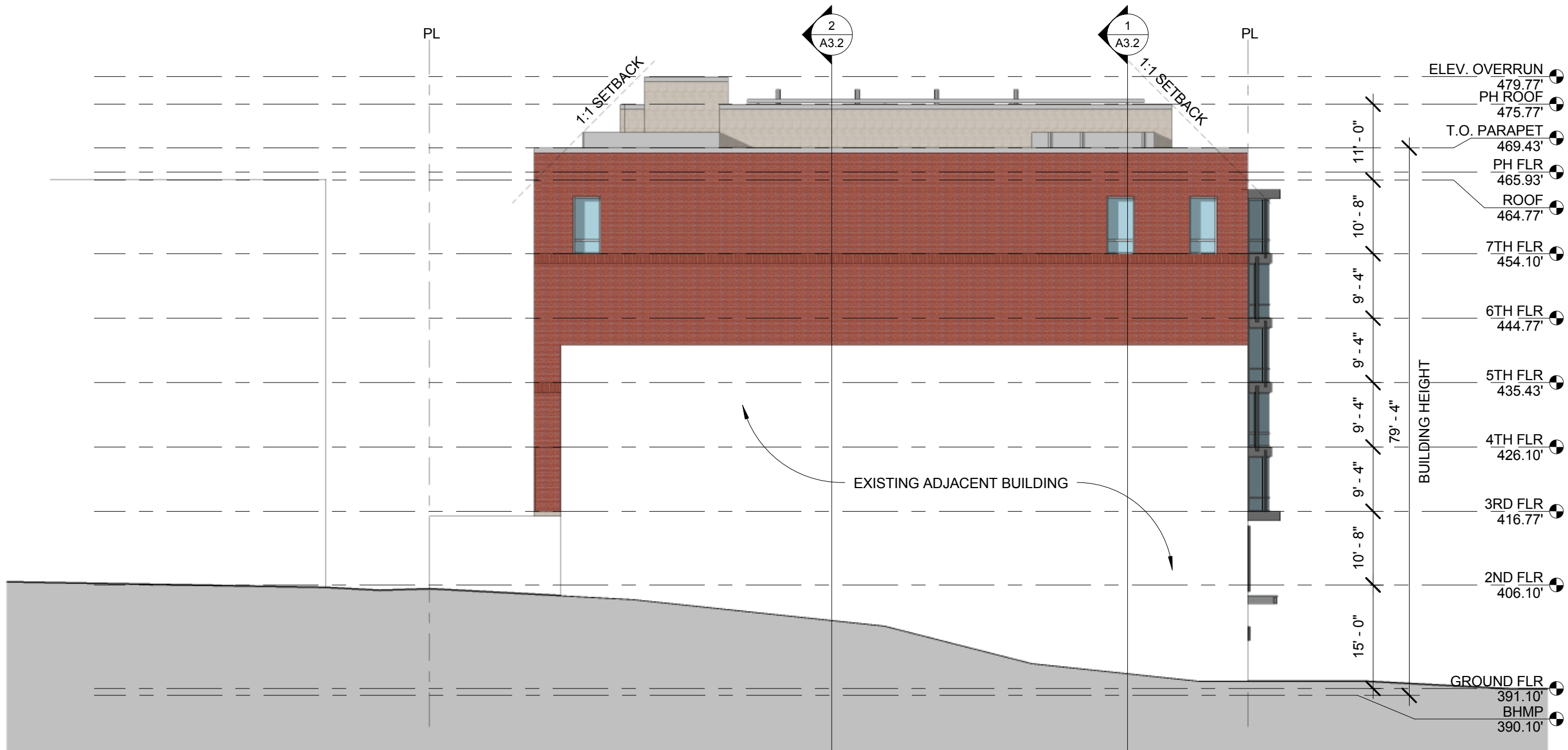
Bonstra Haresign
ARCHITECTS

EAST EXTERIOR ELEVATION

1728 Fourteenth Street, NW, Suite 300
Washington, DC 20009-4309

www.bonstra.com 202 588 9373 T

A2.3



ELEV. OVERRUN	479.77'
PH ROOF	475.77'
T.O. PARAPET	469.43'
PH FLR	465.93'
ROOF	464.77'
7TH FLR	454.10'
6TH FLR	444.77'
5TH FLR	435.43'
4TH FLR	426.10'
3RD FLR	416.77'
2ND FLR	406.10'
GROUND FLR	391.10'
BHMP	390.10'

1 NORTH ELEVATION
A2.4 1/16" = 1'-0"

CLIENT
Dancing Crab Properties, LLC
1301 RIVER ROAD
POTOMAC, MD 20854

STRUCTURAL ENG
STRUCTURA
111 ROCKVILLE PIKE
SUITE 950
ROCKVILLE, MD 20850
301-987-9234

MEP ENGINEER
CAPITOL ENGINEERING GROUP
1825 K STREET NW
SUITE 375
WASHINGTON, DC 20006
202-216-0039

Tenleytown Apartments
4611 46th St NW
Washington, DC 20016

REVISIONS

1	Supplemental Prehearing Filing	9/07/18
---	--------------------------------	---------

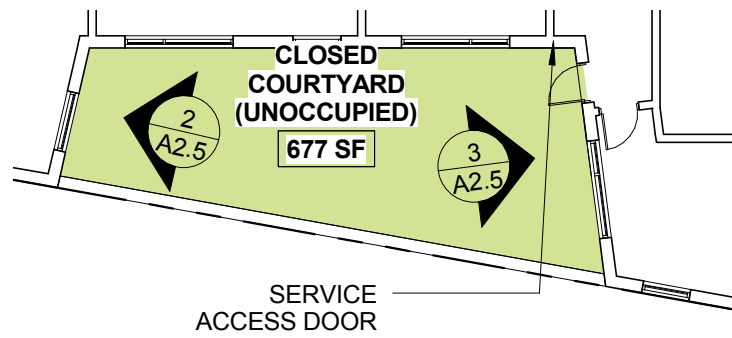
DATE: 09/07/18
PROJECT NO: 2016-042
DRAWN BY: AG
CHECKED BY: JM/BB

Bonstra Harsign ARCHITECTS

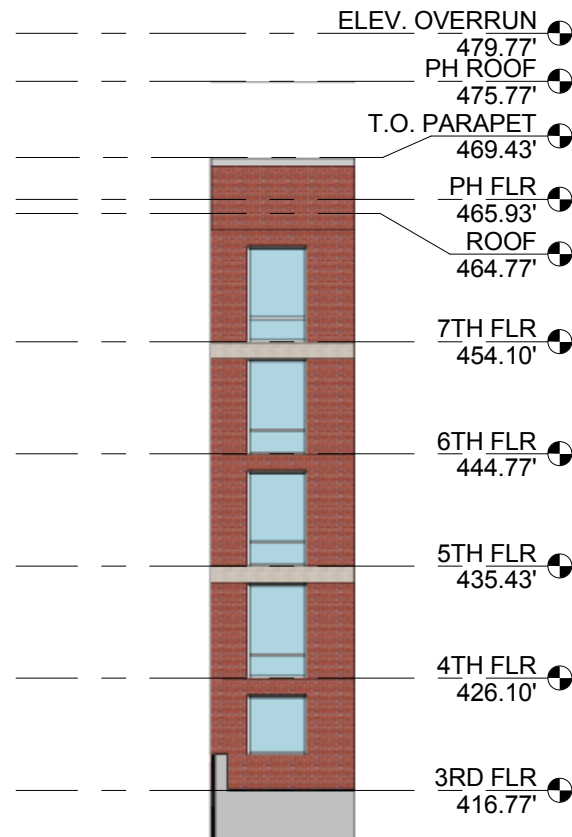
1728 Fourteenth Street, NW, Suite 300
Washington, DC 20009-4309
www.bonstra.com 202 588 9373 T

NORTH EXTERIOR ELEVATION

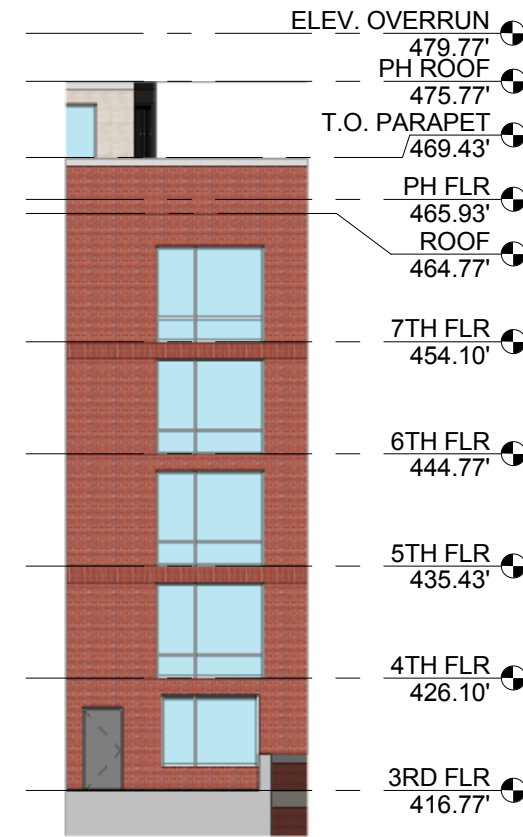
A2.4



1 COURTYARD PLAN
A2.5 1/16" = 1'-0"



2 WEST ELEVATION - COURTYARD
A2.5 1/16" = 1'-0"



3 EAST ELEVATION - COURTYARD
A2.5 1/16" = 1'-0"

CLIENT: Dancing Crab Properties, LLC
 1901 RIVER ROAD
 POTOMAC, MD 20854

STRUCTURAL ENGINEER: STRUCTURA
 111 ROCKVILLE PIKE
 SUITE 950
 ROCKVILLE, MD 20850
 301-987-9234

MECHANICAL ENGINEER: CAPITOL ENGINEERING GROUP
 1825 K STREET NW
 SUITE 375
 WASHINGTON, DC 20006
 202-216-0039

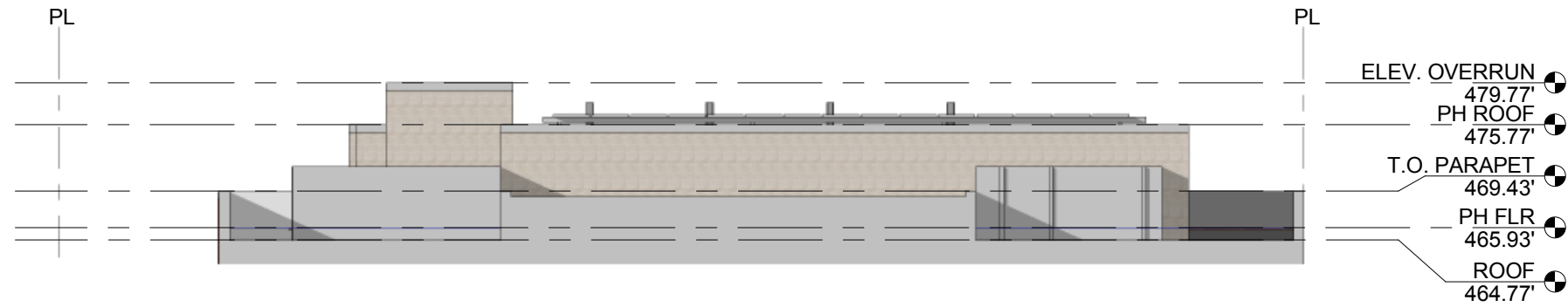
Tenleytown Apartments
 4811 46th St NW
 Washington, DC 20016

REVISIONS
 1 Supplemental Prehearing Filing 9/07/18

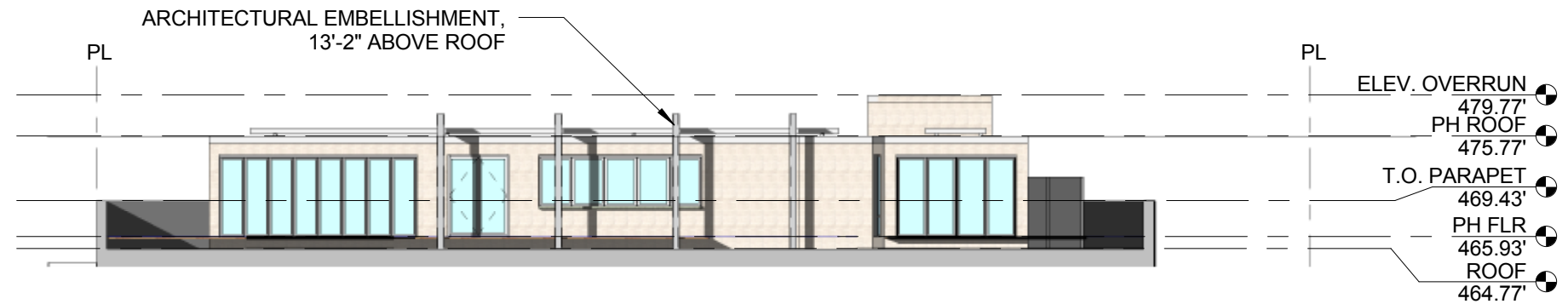
DATE: 09/07/18
 PROJECT NO: 2016-042
 DRAWN BY: AG
 CHECKED BY: JMBB

Bonstra Haresign ARCHITECTS
 COURTYARD ELEVATIONS

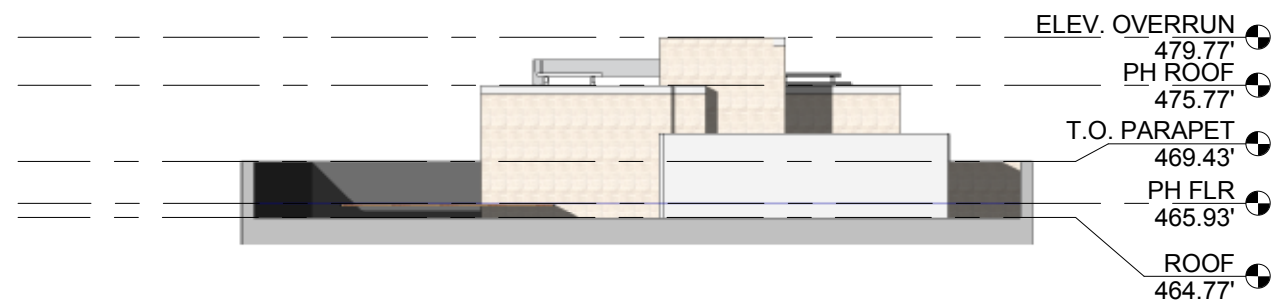
A2.5



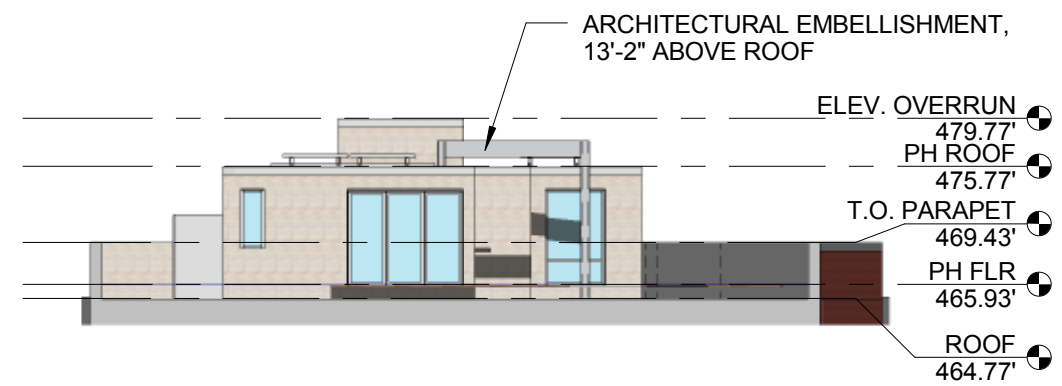
4 NORTH ELEVATION - PENTHOUSE
A2.6 1/16" = 1'-0"



3 SOUTH ELEVATION - PENTHOUSE
A2.6 1/16" = 1'-0"



2 EAST ELEVATION - PENTHOUSE
A2.6 1/16" = 1'-0"



1 WEST ELEVATION - PENTHOUSE
A2.6 1/16" = 1'-0"

Dancing Crab Properties, LLC
1901 RIVER ROAD
POTOMAC, MD 20854

STRUCTURA
111 ROCKVILLE PIKE
SUITE 950
ROCKVILLE, MD 20850
301-987-9234

CAPITOL ENGINEERING GROUP
1825 K STREET NW
SUITE 375
WASHINGTON, DC 20006
202-216-0039

Tenleytown Apartments
4811 46th St NW
Washington, DC 20016

REVISIONS
1 Supplemental Prehearing Filing 9/07/18

DATE: 09/07/18
PROJECT NO: 2016-042
DRAWN BY: AG
CHECKED BY: JMB

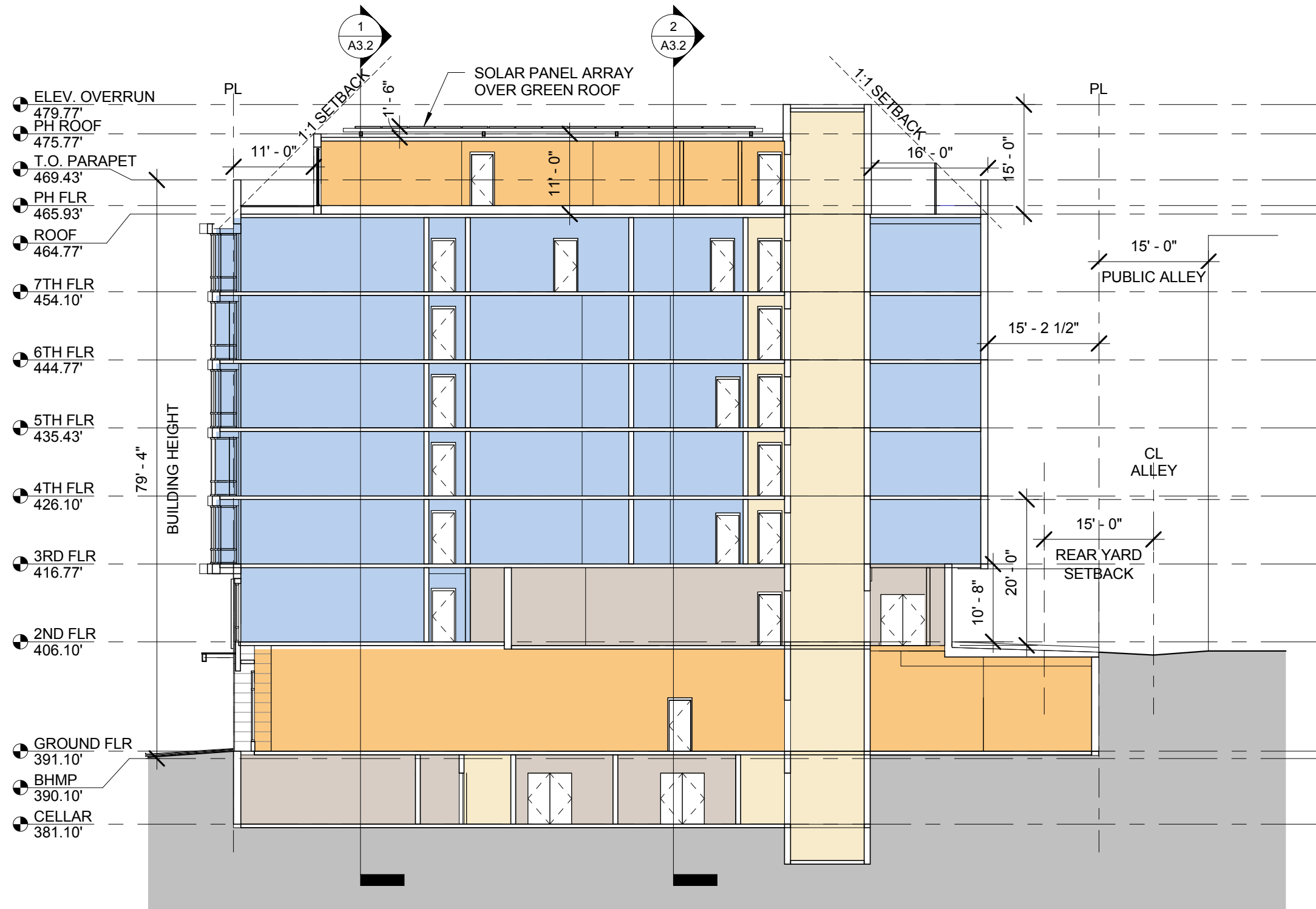
Bonstra Haresign
ARCHITECTS

PENTHOUSE ELEVATIONS

1728 Fourteenth Street, NW, Suite 300
Washington, DC 20009-4309

www.bonstra.com 202 588 9373 T

A2.6



1 LONGITUDINAL SECTION
A3.1 1/16" = 1'-0"

Dancing Crab Properties, LLC
 1301 RIVER ROAD
 POTOMAC, MD 20854

STRUCTURA
 111 ROCKVILLE PIKE
 SUITE 950
 ROCKVILLE, MD 20850
 301-987-9234

CAPITOL ENGINEERING GROUP
 1825 K STREET NW
 SUITE 375
 WASHINGTON, DC 20006
 202-216-0039

Tenleytown Apartments
 4611 46th St NW
 Washington, DC 20016

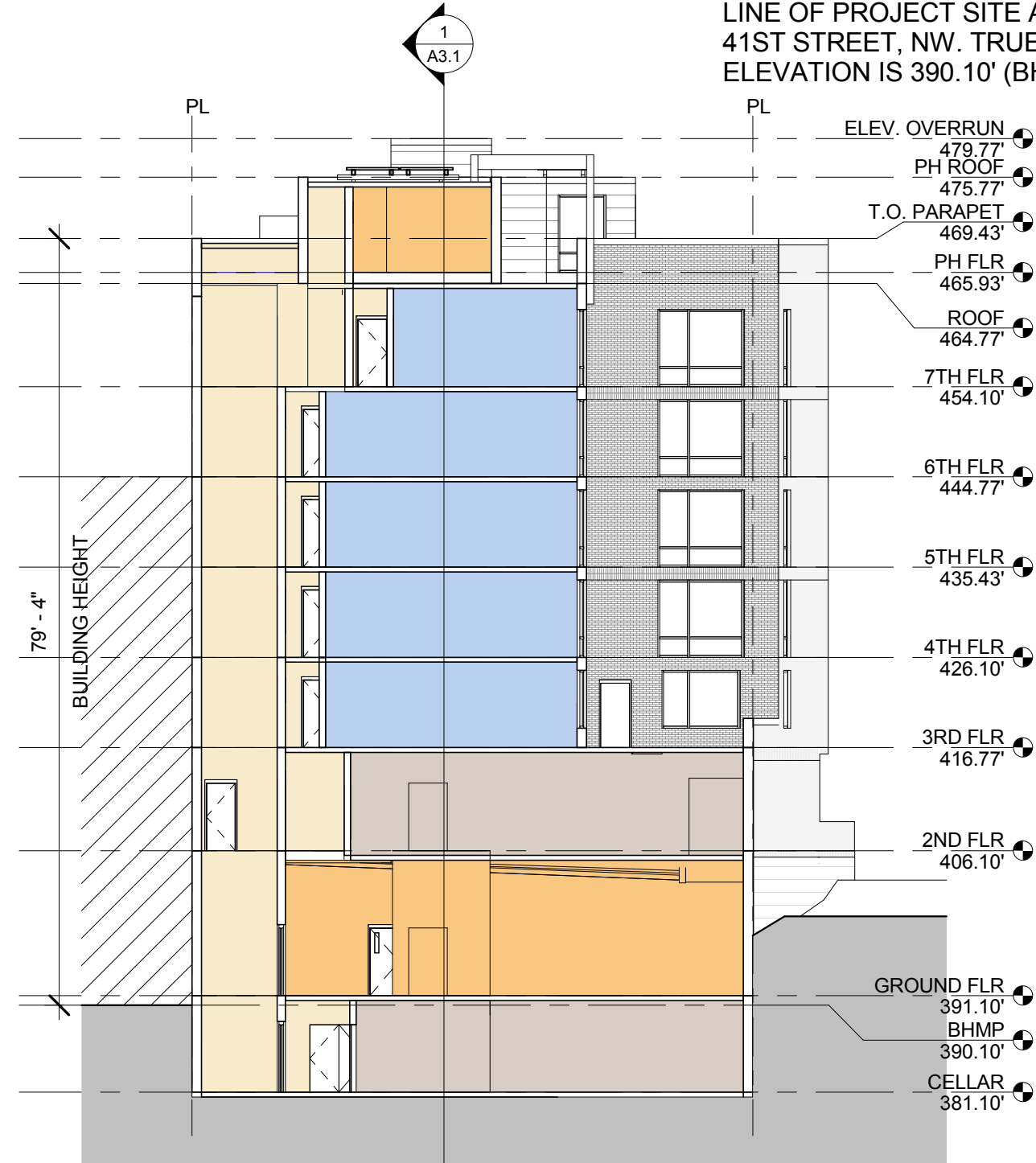
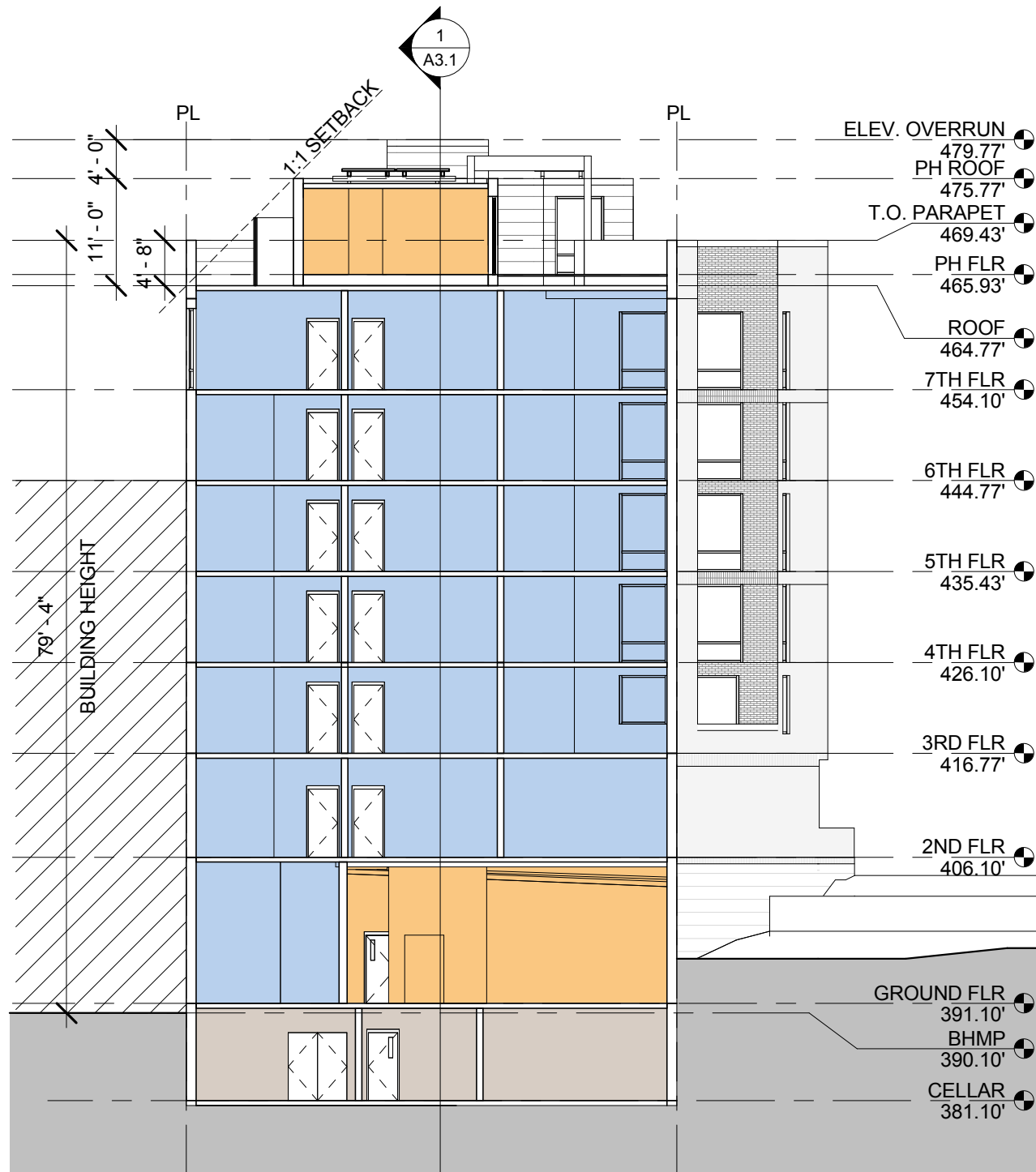
REVISIONS
 1 Supplemental Prehearing Filing 9/07/18

DATE: 09/07/18
PROJECT NO: 2016-042
DRAWN BY: AG
CHECKED BY: JMB

Bonstra Haresign ARCHITECTS

EAST-WEST BUILDING SECTION

NOTE: PROJECT REFERENCE POINT (0'-0") IS AT TOP OF CURB AT CENTER LINE OF PROJECT SITE AT 41ST STREET, NW. TRUE ELEVATION IS 390.10' (BHMP).



1 CROSS SECTION 1
A3.2 1/16" = 1'-0"

2 CROSS SECTION 2
A3.2 1/16" = 1'-0"

Dancing Crab Properties, LLC
1301 RIVER ROAD
POTOMAC, MD 20854

STRUCTURAL ENG
STRUCTURA
111 ROCKVILLE PIKE
SUITE 950
ROCKVILLE, MD 20850
301-987-9234

MEP ENGINEER
CAPITOL ENGINEERING GROUP
1825 K STREET NW
SUITE 375
WASHINGTON, DC 20006
202-216-0039

Tenleytown Apartments
4611 46th St NW
Washington, DC 20016

REVISIONS
1 Supplemental Prehearing Filing 9/07/18

DATE: 09/07/18
PROJECT NO: 2016-042
DRAWN BY: AG
CHECKED BY: JMB

Bonstra Haresign ARCHITECTS

1728 Fourteenth Street, NW, Suite 300
Washington, DC 20009-4309
www.bonstra.com 202 588 9373 T

NORTH-SOUTH BUILDING SECTION

A3.2

